

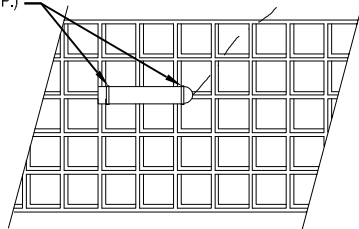
PLASTIC WIRE TIES OR WAXED LACE (TYP.)

CONNECTION IN WIRE RACEWAY

TYPICAL CASE DISCHARGE HONEYCOMB

CONNECTION IN WIRE RACEWAY

PLASTIC WIRE TIES OR WAXED LACE (TYP.)



TYPICAL CASE DISCHARGE GRILLE

NOTES:

1. PROBE ASSEMBLIES ARE TO BE MOUNTED IN DISCHARGE (SUPPLY) GRILLE AND RETURN GRILLE. PROBE MUST BE LOCATED IN CENTER LINE OF CASE ADJACENT TO THE INSTALLED TEMPERATURE INDICATOR.
2. ENSURE THAT PROBE ASSEMBLY WIRING IS SECURELY FASTENED AWAY FROM DEFROST HEATERS.

TEMPERATURE PROBE PLACEMENT IN DISPLAY CASES

NO SCALE

<p>DATE</p> <p>JUN 2022</p>	<p style="text-align: center;">DEFENSE COMMISSARY AGENCY DIRECTORATE OF ENGINEERING FORT LEE, VIRGINIA - LACKLAND AFB, TEXAS</p> <p>TITLE</p> <p style="text-align: center;">TEMPERATURE PROBE PLACEMENT, TYPICAL DISPLAY CASE</p>	<p>DESIGN STANDARD</p> <p>230916-10</p>
		<p>REF.</p> <p>REV.</p>